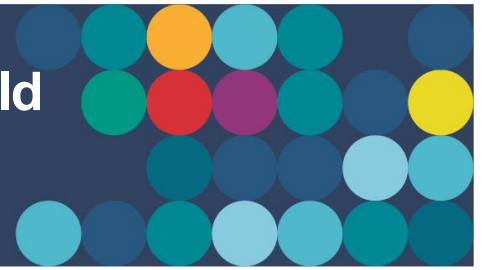


Help us spread the message that could save lives this bushfire season



You **SHOULD NOT** rely on scheme water during a bushfire

Residents living in or near bushland are reminded not to rely on public water supplies if they plan to stay and defend their homes during a bushfire.

If you plan to stay and defend your home you must have an INDEPENDENT water supply and pumping capability. Scheme water may not be available due to damaged infrastructure, extreme demand depleting supply and pressure, or a cut to power which is used to pump water.

ARE YOU

BUSHFIRE

READY?

areyouready.wa.gov.au

We have made our own preparations for the 2017-18 bushfire season by readying equipment and systems to cope with extreme conditions. Despite these efforts, it is likely there will be a reduction in water pressure, and scheme water supply tanks may run empty in the event of fire.

For more information about preparing a bushfire survival plan and what you will need to actively defend your home, visit the Department of Fire and Emergency Services website www.emergency.wa.gov.au/prepare

A message from the Department of Water

The Department of Water has advised people in bushfire prone areas with bores and access to surface water that they can take and store water to support bushfire plans.

For more information on how the Department of Water's rules support bushfire preparedness, visit www.water.wa.gov.au/fireplanning

Emergency Numbers	
Fire or life threatening emergencies	000
SES Emergency Assistance	132 500
Emergency Information	13 DFES (13 13 37)